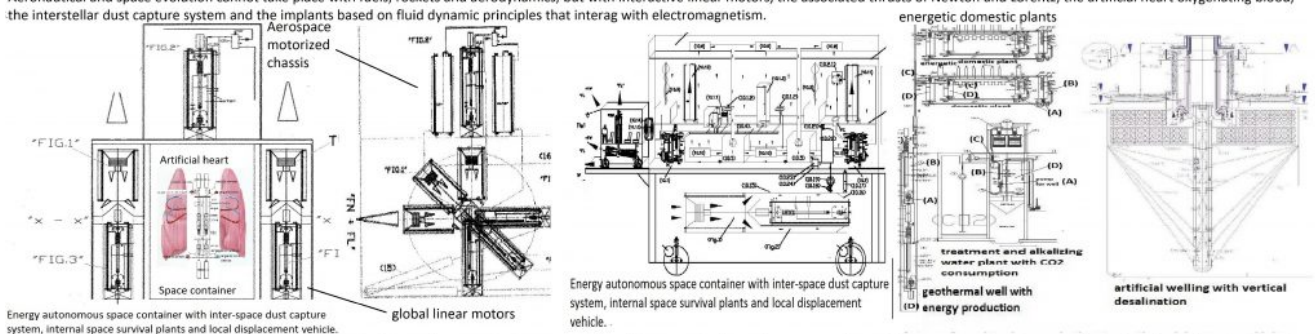


# The worldwide misunderstanding of perpetual motion that has affected terrestrial development and space research.

## The worldwide misunderstanding of perpetual motion that has affected terrestrial development and space research.

Aeronautical and space evolution cannot take place with fuels, rockets and aerodynamics, but with interactive linear motors, the associated thrusts of Newton and Lorentz, the artificial heart oxygenating blood, the interstellar dust capture system and the implants based on fluid dynamic principles that interact with electromagnetism.



Energy autonomous space container with inter-space dust capture system, internal space survival plants and local displacement vehicle.

It is no coincidence that science and terrestrial school teaching have convinced humans that perpetual motion is not possible and that terrestrial machines and systems cannot have yields greater than 100%. Earth science and technology, affirming this and teaching it also in world schools, have created an immense amount of scientists and professionals who investigate single scientific principles and single technologies, excluding from progress the interactive physical principles, which in nature make the difference between chemistry and biochemistry, magnetism and electromagnetism. These principles not used by science and world institutions, above all concern the identification of the primary source of clean earth energy. Which cannot be nuclear or even thermal because these energy sources are consumed and transformed, producing polluting side effects that only in the universe can be acceptable, given the immense distances between the planets inhabited by living beings or with biological life. However, terrestrial science has not made these simple reflections. It used the same universal energy sources while failing to neutralize the side effects (radioactive waste, SO<sub>x</sub>, NO<sub>x</sub>, CO, CO<sub>2</sub>, lead oxides, fine dust, immense quantities of steam). The primary sources of terrestrial energy cannot even be the current renewable energies, which are not based on the transformation of matter but are bulky, discontinuous and with low yields (wind, solar, hydroelectric). The primary source of terrestrial energy is an interactive energy, which can be extracted from the environment, at the terrestrial temperature, in every corner of the Earth in the instant it is needed, without producing any side effects. There are many ways to extract this energy from the environment, but the simplest and most elementary form was indicated in the article published on 22.07.2016

<http://www.spawhe.eu/relativity-and-technology-in-the-new-hydroelectric-energy/>, after the undersigned has seen that science and world public institutions have made four international patents and one European on the cleaning of fossil energy from CO<sub>2</sub> combined with purification and recycling of water with a single interactive purification system expire without financing them. The in-depth study of these solutions allowed the identification of the interactive energetic physical principles, which in particular cases also occur spontaneously in nature (artesian wells). The undersigned, has realized that making them happen according to the wishes of humans it is necessary to modify the machines and fluid dynamic systems in the world. World science did not have the intuition and the patience to look for a primary source of infinite energy which, by not transforming matter, borrowing it only from the environment, in fixed and mobile plants, would produce the induced terrestrial electromagnetism of current generators, electric, which can power heat pump systems or simple electric resistances and refrigerant fluids with heat exchangers to produce heat and cold. He did not use these electric current generators to power electric motors that produce drive torques which, by means of wheels or turbo propellers, can produce the movement of land transport vehicles on wheels or the thrust of Newton in water and air. He did not think that the same electric energy, extracted from the environment, can also move the sliding tracks of permanent magnets that produce the induced currents in solenoids placed outside the plants that produce the primary energy at terrestrial temperatures to achieve the electromagnetic thrust of Lorentz which is added to that of Newton to exit the earth's atmosphere. Therefore, primary energy, fully recycled, can also be produced in mobile land and space plants if the necessary technologies and ingredients are available. This is only possible if you draw from an energy source that costs nothing and is not consumed. Therefore, even hydrogen transformed into fuel is a mockery by science and world public institutions towards humans. The undersigned doubts that we are not governed by human beings, or it is I who have undergone a metamorphosis and have turned into an alien who thinks differently, since I do not find scientific interlocutors, and institutions available to listen. I am not surprised not to be listened to by entrepreneurs, who would have many plants and machines to be scrapped. This should be done by world government incentives, funded globally to fight the corona virus pandemic. Which was born mainly because we have the wrong development model and earth energies. Instead, world politicians, with the advice of science, are continuing to finance the current non-interactive, non-purifying, unsustainable energies for the global economy, which will never be able to take us into space for the simple fact that they are consumed and they cannot be replenished with natural elements that can be captured in interstellar dust through global interactive linear motors. Science and world politicians cannot continue to ignore Spawhe's inventions indefinitely, hiding behind the bureaucrats of the patent offices who still believe in the fable of "perpetual motion". All doubts must be clarified with specific experiments in the interest of international social justice and future generations. Luigi Antonio Pezone

## Abstract

It is no coincidence that science and terrestrial school teaching have convinced humans that perpetual motion is not possible and that terrestrial machines and systems cannot have yields greater than 100%. Earth science and technology, affirming this and teaching it also in world schools, have created an immense amount of scientists and professionals who investigate single scientific principles and single technologies, excluding from progress the interactive physical principles, which in nature make the difference between chemistry and biochemistry, magnetism and electromagnetism. These principles not used by science and world institutions,

above all concern the identification of the primary source of clean earth energy. Which cannot be nuclear or even thermal because these energy sources are consumed and transformed, producing polluting side effects that only in the universe can be acceptable, given the immense distances between the planets inhabited by living beings or with biological life. However, terrestrial science has not made these simple reflections. It used the same universal energy sources while failing to neutralize the side effects (radioactive waste, SO<sub>x</sub>, NO<sub>x</sub>, CO, CO<sub>2</sub>, lead oxides, fine dust, immense quantities of steam). The primary sources of terrestrial energy cannot even be the current renewable energies, which are not based on the transformation of matter but are bulky, discontinuous and with low yields (wind, solar, hydroelectric). The primary source of terrestrial energy is an interactive energy, which can be extracted from the environment, at the terrestrial temperature, in every corner of the Earth in the instant it is needed, without producing any side effects. There are many ways to extract this energy from the environment, but the simplest and most elementary form was indicated in the article published on

22.07.2016 <http://www.spawhe.eu/relativity-and-technology-in-the-new-hydroelectric-energy/>, after the undersigned has seen that science and world public institutions have made four international patents and one European on the cleaning of fossil energy from CO<sub>2</sub> combined with purification and recycling of water with a single interactive purification system expire without financing them. The in-depth study of these solutions allowed the identification of the interactive energetic physical principles, which in particular cases also occur spontaneously in nature (artesian wells). The undersigned, has realized that making them happen according to the wishes of humans it is necessary to modify the machines and fluid dynamic systems in the world. The in-depth study of these solutions allowed the identification of the interactive energetic physical principles, which in particular cases also occur spontaneously in nature (artesian wells). The

undersigned, has realized that making them happen according to the wishes of humans it is necessary to modify the machines and fluid dynamic systems in the world. World science did not have the intuition and the patience to look for a primary source of infinite energy which, by not transforming matter, borrowing it only from the environment, in fixed and mobile plants, would produce the induced terrestrial electromagnetism of current generators. electric, which can power heat pump systems or simple electric resistances and refrigerant fluids with heat exchangers to produce heat and cold. He did not use these electric current generators to power electric motors that produce drive torques which, by means of wheels or turbo propellers, can produce the movement of land transport vehicles on wheels or the thrust of Newton in water and air. He did not think that the same electric energy, extracted from the environment, can also move the sliding tracks of permanent magnets that produce the induced currents in solenoids placed outside the plants that produce the primary anergy at terrestrial temperatures to achieve the electromagnetic thrust of Lorentz which is added to that of Newton to exit the earth's atmosphere. Therefore, primary energy, fully recycled, can also be produced in mobile land and space plants if the necessary technologies and ingredients are available. This is only possible if you draw from an energy source that costs nothing and is not consumed. Therefore, even hydrogen transformed into fuel is a mockery by science and world public institutions towards humans. The undersigned doubts that we are not governed by human beings, or it is I who have undergone a metamorphosis and have turned into an alien who thinks differently, since I do not find scientific interlocutors, and institutions available to listen. I am not surprised not to be listened to by entrepreneurs, who would have many plants and machines to be scrapped. This should be done by world government incentives, funded globally to fight the corona visus pandemic. Which was born mainly because we have the wrong development model and earth energies. Instead, world politicians, with the advice of science, are continuing

to finance the current non-interactive, non-purifying, unsustainable energies for the global global economy, which will never be able to take us into space for the simple fact that they are consumed and they cannot be replenished with natural elements that can be captured in interstellar dust through global interactive linear motors. Science and world politicians cannot continue to ignore Spawhe's inventions indefinitely, hiding behind the bureaucrats of the patent offices who still believe in the fable of "perpetual motion". All doubts must be clarified with specific experiments in the interest of international social justice and future generations.

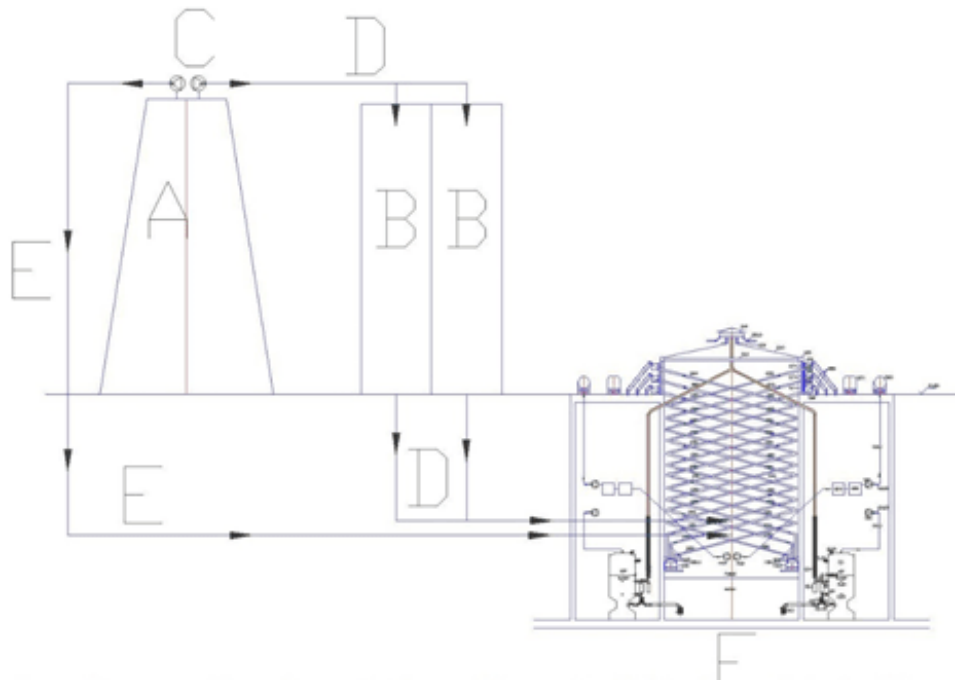
The acronym SPAWHE (synergic plants, artificial welling, hydro electromagnetism) has become too small to contain all human, scientific, technological and structural inventions, which should be updated to stop the damage that thermal and nuclear processes have produced with their effects collateral that would have been avoided with the triggering of terrestrial interactive physical processes.

To be wrong is human. It is not human not to correct mistakes. The common responsibility of the world's economic and political scientific faculties in this huge disaster that has not lasted for a year but from the beginning of the industrial era goes beyond every possible imagination.

Here is SPAWHE's illustrated nursery rhyme:

The cleaning of fossil energy published in spawhe, based, above all on inorganic chemistry that is able to absorb CO<sub>2</sub> by producing carbonates in the water, has not been understood by science and by the entire world ruling class. The limestone greenhouses that send the carbonates to the lakes and seas that are acidifying have not been built.

## CALCAREOUS GREENHOUSES FOR FUMES AND DUST PURIFICATION SERRE CALCAREE PER DEPURAZIONE FUMI E POLVERI



The Figure shows the connection scheme to the world's most polluting thermal plants. Where A represents a blast furnace, incinerator, cement plant, a large thermal power plant, an oven for the production of lime. B represents the current filtration system of plants A which clearly are not sufficient to purify globally. C are the fumes and dust extraction fans. D and E, are the paths of the dust up to the inside of the calcareous greenhouse F, which purifies them by consuming the CO<sub>2</sub> the SO<sub>x</sub> and NO<sub>x</sub> contained in the fumes while producing compressed hydroelectric energy.

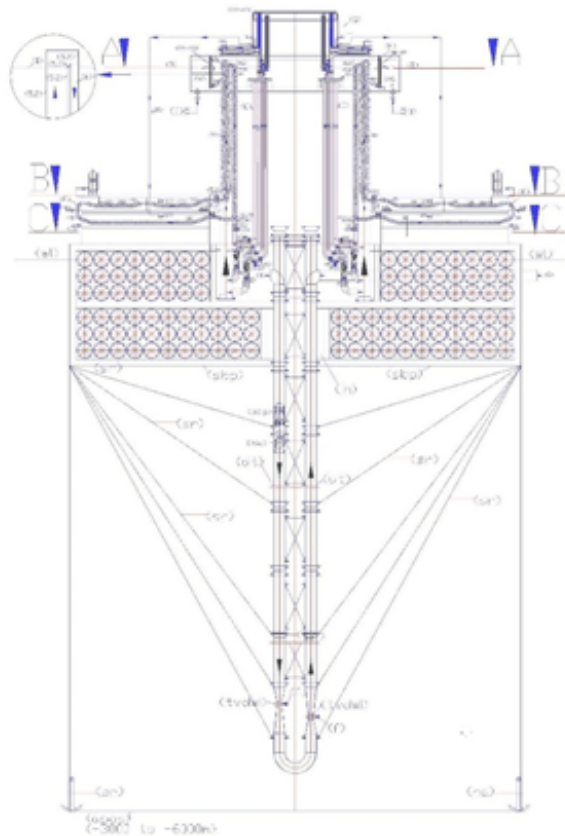
La Figura mostra lo schema di collegamento agli impianti termici più inquinanti al mondo. Dove A rappresenta un altoforno, inceneritore, cementificio, una grande centrale termica, un forno per la produzione della calce. B rappresenta l'attuale sistema di filtrazione degli impianti A che chiaramente non sono sufficienti a depurare globalmente. C sono i ventilatori di estrazione dei fumi e delle polveri. D ed E, sono i percorsi delle polveri fino all'interno della serra calcarea F, che li depura consumando il CO<sub>2</sub> i SO<sub>x</sub> e NO<sub>x</sub> contenuti nei fumi mentre si produce energia idroelettrica compressa.

Not even the artificial welling has been realized that would fight oceanic acidification by raising the carbonates solubilized in the oceans in four billion years.



## ARTIFICIAL WELLING

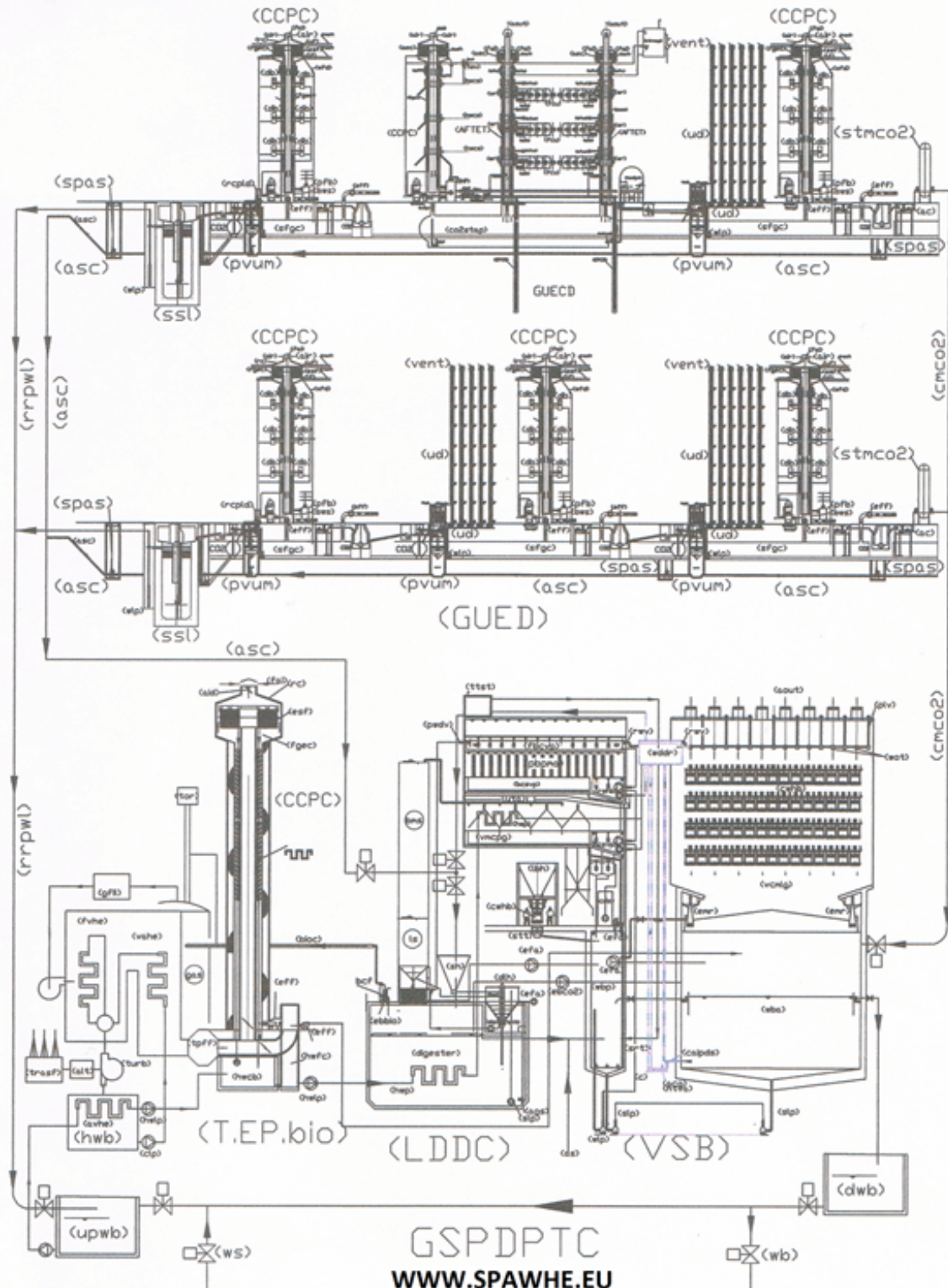
### THE INTERACTIVE SYSTEM TO COMBAT ACIDIFICATION OF OCEANS PRODUCING DISSALATIONS, ENERGY, FOOD AND WORK.



The state of the art in the development of desalination and demineralization treatment of marine and brackish water has been affected, along with industrial systems, purification, energy, food and protective of the environment, the absence of synergies between the pumps and hydraulic turbines and from the incorrect approach with the gravitational force, which must not be won by the hydraulic lifting but sustained, with one-way movement of water, especially in the gravitational direction, in the sea, in large basins, in open tanks. With simply overturned pumps coupled to the turbines can produce low-cost all the energy you need; continuing the descent and ascent of water in deep waters, for the venturi effect, we can suck and lift small percentages of deep water with high calcium and carbon percentage solubilized in them, that arrived at the surface, producing phytoplankton and alkalinity, increasing the abundance of fish and combating acidification and global warming; while on the floating platform, made with extruded and ribbed tubes made of low density polyethylene, blown in them polystyrene foam to make them unsinkable, with the triple synergy between the dual fuel pumps, turbines and the marine water recycling, by applying known hydraulic principles for centuries, as that of communicating vessels, the laws of Bernoulli and Pascal, placing, strategically, the electric double suction pump between a high positive hydraulic head and the turbines, we can desalinate large quantities of water, simply transforming a vertical tube in a ionic exchanger and recycling pipes and mixing in the energy producers, while the anionic and cationic synthetic resins, circulating contained in perforated polyethylene spheres as sieves. These spheres, floating climbing ion exchanger and descend for gravity emptying water in downhill tubes. By means of diverters change the path compared to the flow to be immersed in the washing tanks and regeneration of the resins, and reinserted again, indefinitely, in ion exchange circuit without interruption of the desalination cycle and energy production and without costs for heating the water or replace the membranes. If we want to exploit the immense riches of the sea, floating solutions have no alternative. The systems must be designed supported from above, since it cannot exist electromechanical equipment that can work to the abyssal depths. The sustainability of global systems is not only based on high technologies and special materials but above all on the physical basic principles, chemical, hydraulic and mechanical. The first problem that could face this solution is to provide a home and a job to migrant peoples fleeing war and hunger.

**FLOATING SYSTEM, HYDROELECTRIC, DESALTER, EXTRACTOR OF CALCIUM AND CARBON FROM MARINE DEEP WATER.**  
<http://www.spawhe.eu>

GLOBAL FOSSIL INTERACTIVE ENERGY DEAD IN BANDS, KILLED BY THE SILENCE OF ENVIRONMENTAL AUTHORITIES.



This figure represents the fossil interactive energy that could be created by modifying the chimneys and the urban plants, described in the old initial page of <http://www.spawhe>. To economize this system is born the interactive compressed hydroelectric energy, which does not emits pollution and CO2 and can be mounted even on means of transport, which is described in the new home page of <http://www.spawhe>. These two models of universal development, sustainable and protective of the environment were developed by a Neapolitan inventor, but ignored both by the world environmental authorities. On the other hand, UNESCO has recognized Neapolitan pizza as a World Heritage. The Neapolitans can not have both awards.

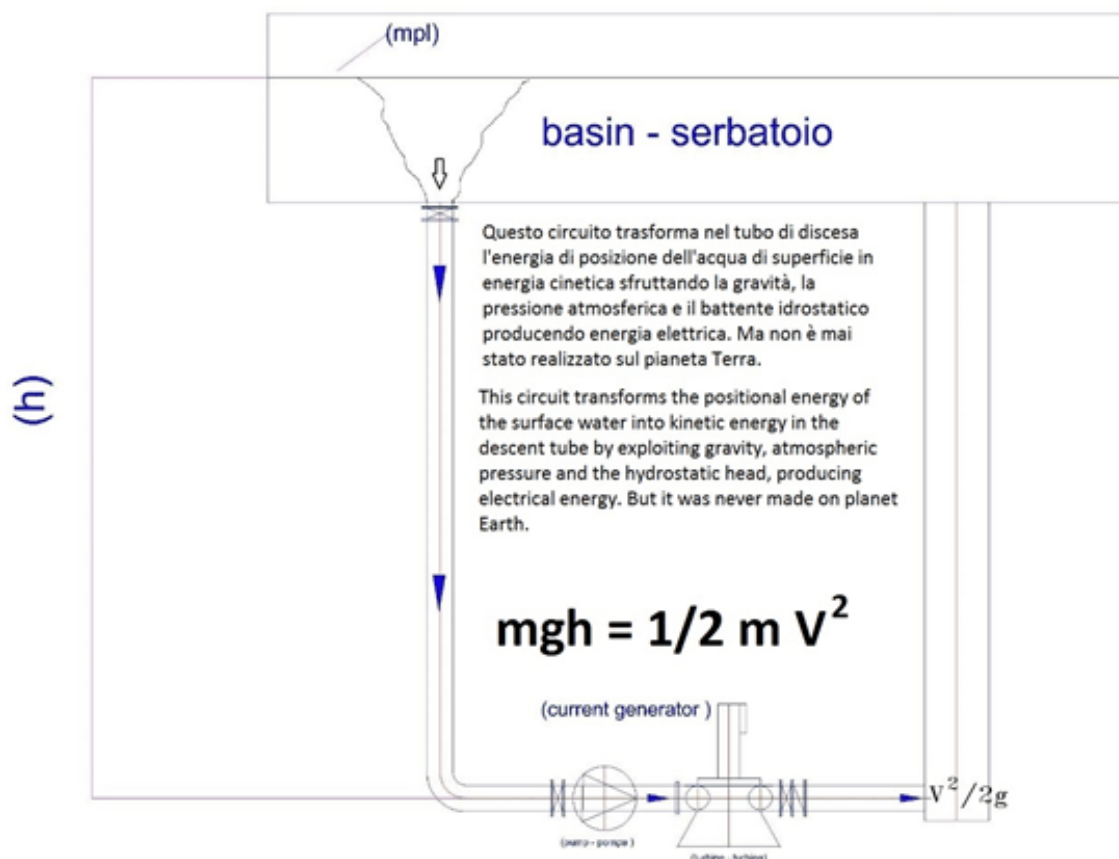
To speed up the processes and reduce the energy costs that would have involved the circulation of very large quantities

of water necessary to neutralize the very large quantities of CO<sub>2</sub> emitted by the current thermal power plants and heat engines, it has gradually been technologically transformed into solutions of less space by exploiting the principles by Pascal and Henry. In fact, I realized that on planet Earth, all the activities that nature produces through organic and inorganic chemistry, photosynthesis and the carbon cycle can be increased in speed without any need to use thermal, nuclear energy and current renewables. It is sufficient only to increase the operating pressures of the systems, modify the circulation pumps and make the machines work differently. In fact, natural interactive systems expel, with the times required by nature, elements extraneous to natural cycles, due to accidental polluting phenomena, including direct and indirect thermal effects due to volcanic explosions, to natural fires that have always existed on the planet. The current industrial activities of men have multiplied exponentially the elements extraneous to natural cycles; therefore nature is no longer able to restore interactive balances.

Despite having filed the patents of many solutions, I had to suffer the accusation of "perpetual motion" by the Italian and European patent offices. I was forced to publish articles in Italian and English, collecting only silences. What I ask myself is: What good are the high levels of specific knowledge of science if there are no designers and inventors who know how to put them together practically following global purification and energy work cycles? This is the work I have learned to do by installing industrial and environmental systems in a lifetime. Unfortunately, until world governments understand that man-made facilities must be designed globally, there can be no real progress in environmental protection and space research. Regardless of the functions that anthropogenic plants perform, they must not produce side effects in the environment where humans live and in those around them. The overall design is very different from the specific one,



because changing the work cycles also changes the way of designing machines and systems. But as long as the world market governs the environment, no global plants will be built and therefore there will be no machines and plants capable of making them. The ecological transition that is currently being talked about will remain a political utopia. Politicians cannot continue to govern by relying on specific scientific committees. By continuing to govern in this way, they will move from a health emergency to an environmental or energy emergency without ever addressing the problems globally. The United Nations is the largest useless body in the world because instead of protecting the industrial properties of multinationals, it should experiment and disseminate global inventions in the general interest. Today, inventors who propose global solutions find no interlocutors anywhere in the world, both for the scholastic ignorance of perpetual motion that resists, and for the interests of individual national governments and multinationals.



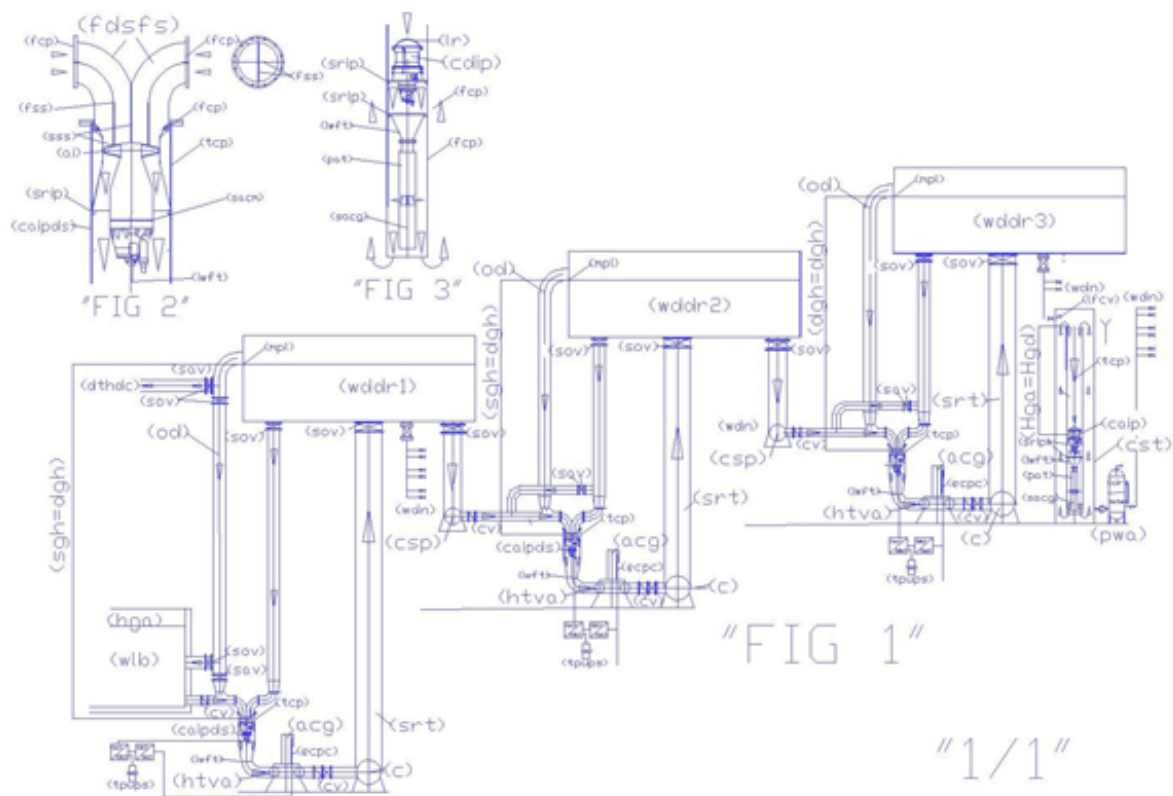
### open hydro circuit with water recycling - Circuito idroelettrico aperto con riciclo di acqua

In this circuit, the position of the pump is very important. Must be placed in the lowest point of the circuit, so that, The upper tank which determines the hydrostatic pressure of the circuit and provides the entire capacity of flow , to minimize the prevalence of the circulation pump, which only has to overcome the state of inertia of the ' water and have the adequate supply passage sections of the turbine. The large tube section, which rises towards the tank, placed after the turbine is considered an extension of the upper tank, for which it is only necessary to calculate the pressure loss at the outlet  $V^2 / 2g$

In questo circuito, la posizione della pompa è molto importante. Deve essere posta nel punto più basso del circuito, affinché, Il serbatoio superiore che determina la pressione idrostatica del circuito e fornisce tutta la portata, riduca al minimo la prevalenza della pompa di circolazione, la quale deve vincere soltanto lo stato d'inerzia dell'acqua ed avere delle sezioni di passaggio adeguate all'alimentazione della turbina. Il tubo di grande sezione, che sale verso il serbatoio, posto dopo la turbina è considerato un prolungamento del serbatoio superiore, per cui è necessario calcolare soltanto la perdita di carico allo sbocco  $V^2 / 2g$

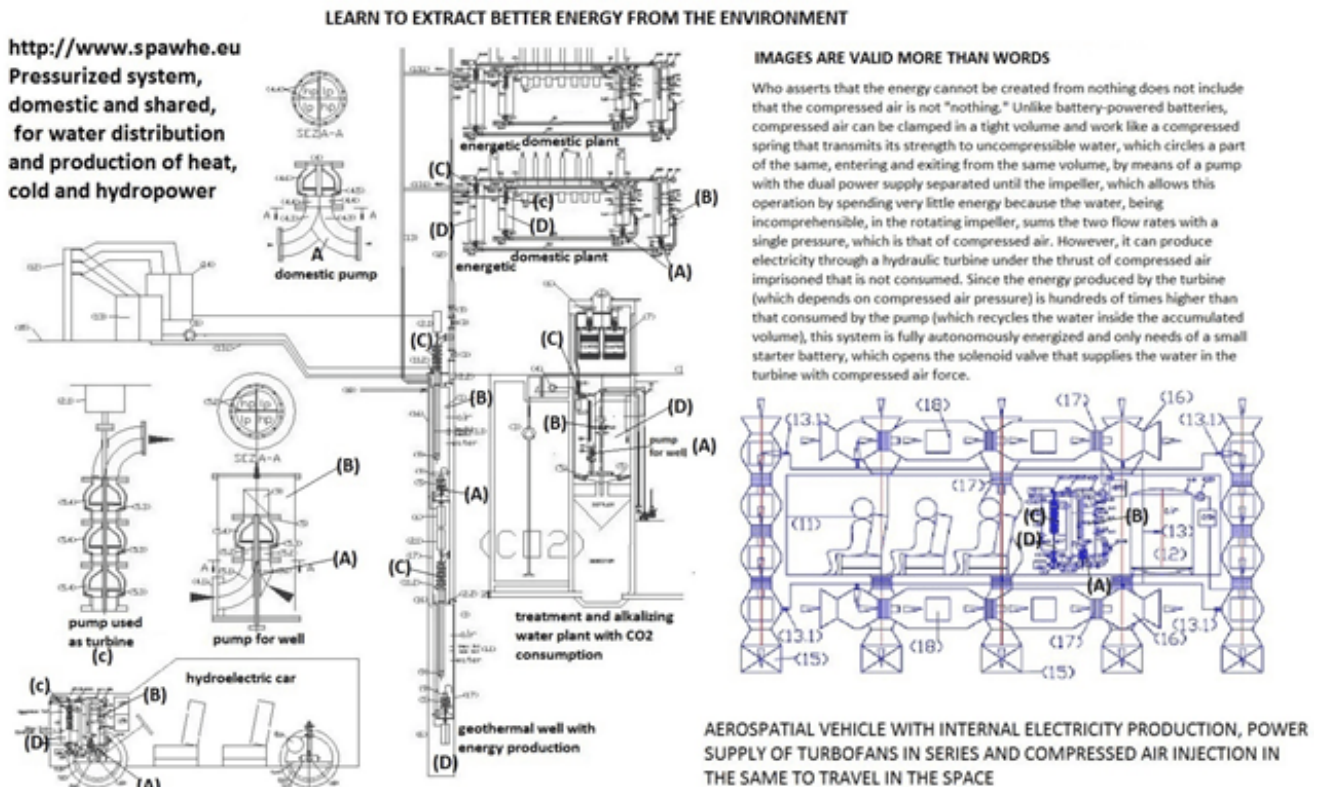
The figure above shows a simple plant never built on planet

Earth because the whole world science did not realize that if we make the water circulation pumps work in the direction of the gravitational force, placing them in series with the turbines we could extract the energy directly from the environment. Having not done this, it was not possible to realize that the water circulation pumps, if in addition to making them pump in the direction of gravitational force, we modify them on the suction side and make them another inlet clearly separated from the main one up to the same impeller, we can always use the same water to create energy because we use one feed to recycle the water from the upper basin and the other feed to introduce into the same impeller the water discharged from a turbine fed by falling water from the same upper basin.



Not having done this, it was not possible to think that by replacing the upper basin with a pressurized autoclave with

compressed air, it being understood that we use a turbine connected to the outlet of the autoclave, we can recover the water drained from the turbine and insert it back into the autoclave, whose pressurized water is recycled with the same impeller of the pump by means of the second supply. In this way, with the same water and the same compressed air, we would have produced a current generator that extracts energy from the environment, with quite small dimensions.

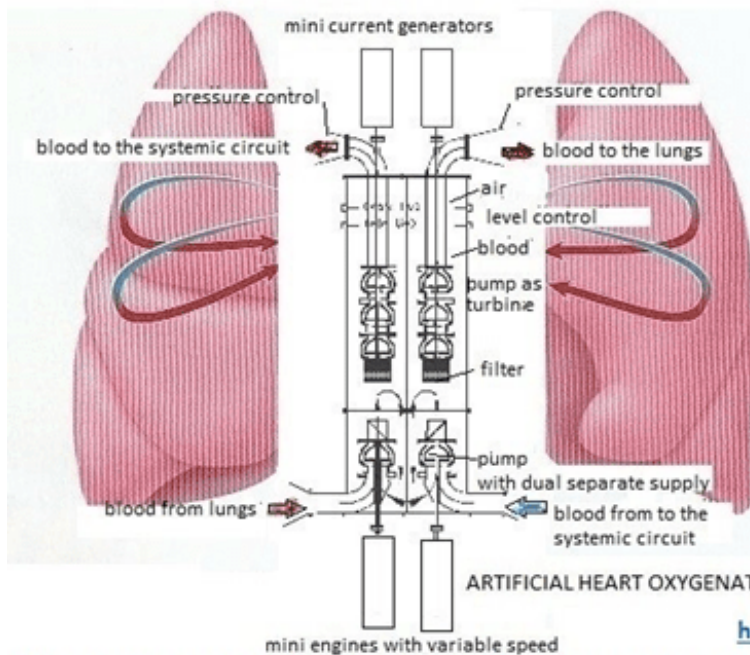


Having not done this, it was not possible to further reduce the dimensions of this current generator by increasing the operating pressure of the autoclave in order to be able to mount it on cars and trucks, on agricultural tractors. Not having done this, it was not possible to think that the overall dimensions can still be reduced by using submersible pumps as turbines mounted directly in cylindrical tubes that would act as autoclaves. Therefore these groups could be used to be inserted directly into the wells to raise the water and at the same time oxygenate the aquifers which today are polluted by agricultural fertilizers, herbicides and pesticides and fecal coliforms. In fact, we know that part of



the air that pressurizes the autoclave dissolves in the water according to Henry's principle, purifying the water for free. Not having done this, it was not possible to think that the overall dimensions could be reduced even further. Even miniaturized and instead of purifying the water from the wells we could purify the human blood, placing two small autoclaves side by side that would replace the right and left ventricles, creating autonomous artificial hearts that would feed the systemic circuit that oxygenates the brain and the lungs to lengthen the life of the 'man.

## Let's stop the perennial slaughter of the world's elderly.



**How you can live most of the human body a well-fed and well-oxygenated brain?**  
**Technological scientific system of survival against disease, disability and old age.**

<https://www.spawhe.eu>

Eighth abstract, If I had started the third phase of my life (that of inventor) with the solutions already identified, I would have directly proposed interactive energies, which are simultaneously energetic and purifying, instead, in thirty-seven years of work, between industry, environment and energy, I only understood that it was necessary to start from scratch in the design of the simplest anthropic systems by purifying water and air together. Only by developing the details could the solutions come out, but I never expected that by developing these details and identifying the interactive purification, which would already have been enough to stop global warming, I would not have received even a euro of funding for the modification of the chimneys, sewers and domestic systems. However, I'm happy with how things turned out. If I had been rewarded by the success on interactive purification, probably, feeling satisfied, I would not have investigated the interactive energies, which gradually allowed me to also have the Italian patent 102016000087373, filed 08.26.2016 entitled "Hydroelectric car with peripheral drive torque at wheels". Ironically, to invent this type of car, I had to leave the car industry, learn about purification systems, water lifting systems and energy systems in general. When I invented this type of car, I had already been retired for 10 years. Practically proving that the human brain continues to produce neurons if it stays in training. I did not make the hydroelectric car and I did not even pay the patent maintenance fees because I am not interested in being an entrepreneur as a retiree. If the world is not ready to carry out these inventions, the world statesmen must take responsibility for them, who want to govern without knowing that the specific skills of science are not sufficient to identify anthropic interactive purification and energy systems because to increase the speed of processes natural, both purifying and energetic, it is necessary to increase the operating pressures of the plants. But at the same time, it is necessary to overcome the state of inertia of the interacting fluids. So it is necessary to change most of the world's anthropogenic plants, making the pumps work the opposite of how they currently pump, not to lift the waters against the gravitational force but to pump in the direction of the gravitational force and produce electromagnetic energy through the turbines and generators of current, placed in series with the pumps themselves in open circuits to fully exploit the kinetic energy produced inside the system, independent of the surrounding environment which can maintain its inertial state. It is a little more complicated to apply this concept in mobile systems such as cars and the small artificial heart where the volumes of water or blood are limited and you need to recycle the water and blood, for this reason pressurized autoclaves have been inserted, but the circulation is always one-way in the direction of exit from the autoclave. In this case, the turbine and the current generator are placed before the circulation pump and this must be modified, compared to the current pumps, so that it is equipped with a second separate power supply that must reach the impeller. Obviously, only the amount of water or blood that comes out to power the turbine can enter the autoclaves due to the principle of impenetrability of the bodies. Failure to understand these simple concepts that could also be understood by scientists like Einstein, Hawking or inventors like Tesla changed the history of humanity, favoring global warming, the destruction of biodiversity and the proliferation of the viruses that world statesmen today want. fight with vaccines. Of course, today there are no alternatives to vaccines, but the question is: when will they understand that all the world's anthropogenic plants must be changed? There was no need to divide the atom. It is sufficient to divide the power supply of the pumps. There is no need to transform hydrogen into fuel, because compressed air is more powerful than hydrogen, it allows infinite operating autonomy and can also enter the human body as it can also take us into space without producing any type. of pollution. <http://www.spawhe.eu/flying-and-floating-cars-with-interactive-global-linear-motors-and-thrust-of-newton-and-lorentz/>, <http://www.spawhe.eu/aerospace-and-submarine-transport-system-with-interactive-primary-and-inductive-linear-motors/>.

Having not done this, it was not possible to think that pressurized cylindrical autoclaves can be incorporated an

external cylinders containing water at atmospheric pressure, outside of which sliding tracks of permanent magnets mounted on transmission chains driven by motors can be made. electric at variable revolutions that would produce an electromagnetic flux of variable intensity which would produce induced currents in a solenoid outside the same water tank. Therefore, we could produce in this tank a linear electromagnetic thrust force according to Lorentz's law at the ambient temperature, without fuel that could be added to the reaction thrust of Newton that would be produced by propellers driven by electric motors always commanded by generators. of current that produce the primary hydroelectric energy, fed by submersible pumps used as turbines placed inside the central reservoirs. Not having done this, it was not possible to replace the current thermal turbofans of aircraft to travel in the atmosphere and in space with energy extracted directly from the environment, it was not possible to create flying cars or submarines that move with the same system. without fuel. It was not possible to make the ships travel without fuel, nor to mount the same system to make mobile barriers in the sea to defend ourselves from high waters. It was not even possible to think that in the space travel of the future we can add to the global linear motors an external steel tunnel connected to the turbo fan, where it will produce a higher vacuum higher than the surrounding space vacuum and connect this tunnel with a small vacuum pump to a thickening tank of the captured powders, which will be emptied periodically letting in the atmospheric air which will feed an electrostatic filter that will recover the powders that will be used together with the other interactive purification and energy plant inventions described on the website <https://www.spawhe.eu> to make humans survive even in space without suffering physiological damage due to the absence of atmospheric pressure, gravity, food resources and raw materials to build spare parts for the machines necessary for survival in space.

In fact, atmospheric air and water will fill the space caravan



wagons full of human beings and will be endlessly recycled, suitably replenished with artificial photosynthesis and carbon cycle, while general gravity will be reinforced, becoming very similar. to the terrestrial one, electrostatically polarizing the paths of atmospheric conditioned air and recycled water in the interactive, energy and purification, compressed hydroelectromagnetic plants, still unknown to terrestrial science.

<http://www.spawhe.eu> AEROSPACE AND SUBMARINE TRANSPORT SYSTEM WITH INTERACTIVE PRIMARY AND INDUCTIVE LINEAR MOTORS

The aeronautical and spatial evolution can not happen with the fuel rockets and aerodynamics, but with the interactive linear motors and the thrusts of Newton and Lorentz associated.

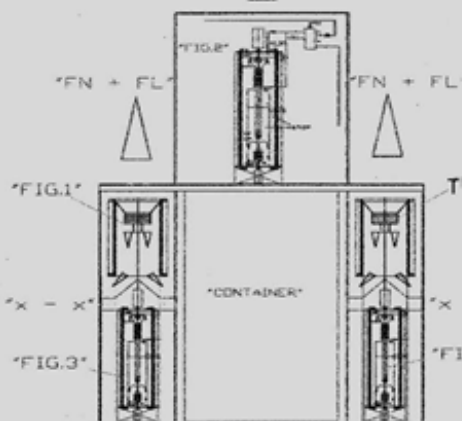


Fig. 4: Cross section of a generic land and space transport vehicle: This diagram shows the figures concerning the components used to make the Lorentz thrust (FL), the Newton thrust (FN) and the position of the containers interchangeable inside the transport frame (T) and the rotation axis of the primary and induced global linear motor (X - X)

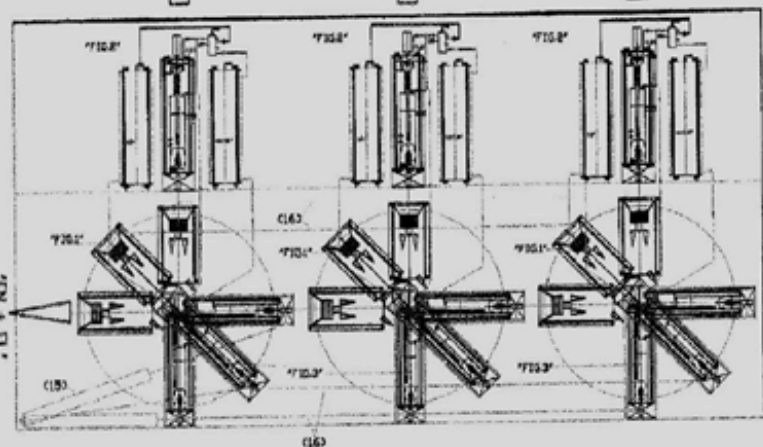
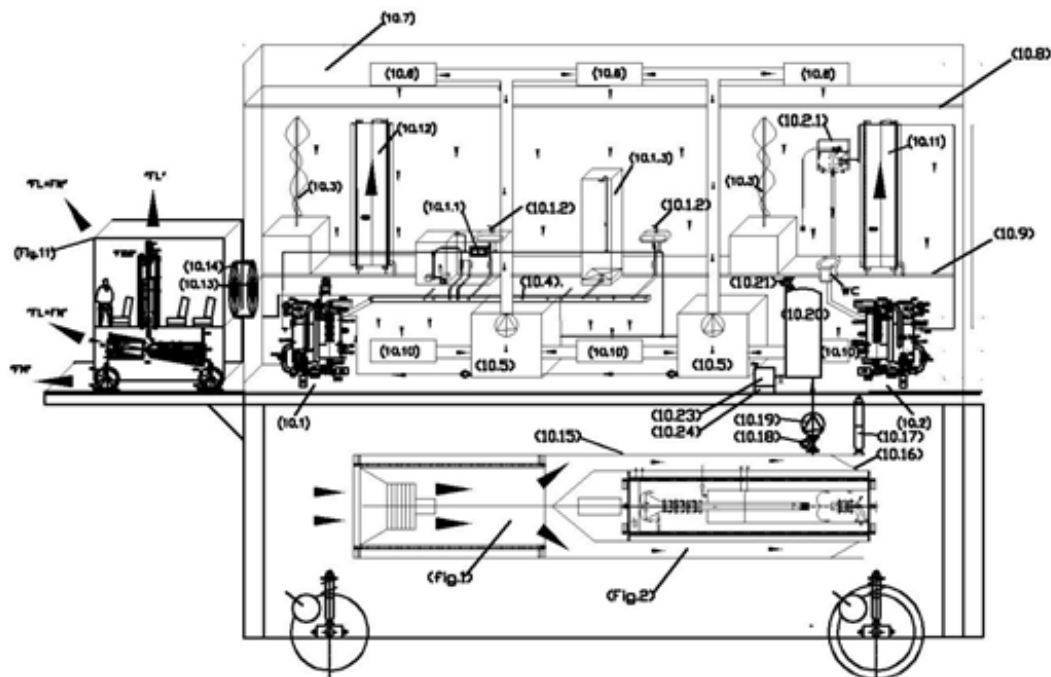


Fig. 5: Longitudinal section of a generic means of land and space transport: This diagram shows the figures concerning the components used to make the Lorentz thrust (FL), the Newton's thrust (FN), the position of the telescopic hydraulic cylinders (15) (one for each side of the global linear motor of fig1), which make the rotation of an arc of circumference of 90 degrees to an element, through the tie rods and articulated struts (16) pivoted at the end of the systems, make all the connected global linear motors perform the same degree of rotation.





"FIG.10"

(10.1) domestic water purification plant; (10.1.1) ultraviolet disinfection system; (10.1.2) drinking water withdrawal point; (10.1.3) shower; (10.2) toilet waste water treatment plant; (10.2.1) toilet drain pan; (10.3) hydroponic cultivation; (10.4) waste water collection channel; (10.5) purification, humidification and air recycling system; (10.6) electrostatically polarized air inlet vents into the environment; (10.7) ceiling air distribution plenum; (10.8) regenerable filter ceiling in steel straw; (10.9) grilled floor with air passage; (10.10) electrostatically polarized air intake vents; (10.11) water reserve tank with external solenoid and vertical circulation of permanent magnets to produce Lorentz thrust; (10.12) compressed air reserve tank with external solenoid and vertical circulation of permanent magnets to produce Lorentz thrust; (10.13) Airtight passage porthole; (10.14) electromagnetic flexible metal bellows with external vacuum-tight gasket; (10.15) external connection steel tunnel between the electric turbofan fig1 and the compressed hydroelectric primary energy production plant of fig.2; (10.16) truncated conical sector closure of the interstellar dust collection tunnel by means of a steel rope which runs in rings external to the closing cone; (10.17) electric actuator for activating dust collection closure; (10.18) shut-off solenoid valve; (10.19) electric vacuum pump; (10.20) high vacuum dust collection tank; (10.21) air inlet solenoid valve at atmospheric pressure; (10.22) solenoid valve for interstellar dust output; (10.23) electrostatic filter; (10.24) removable container for interstellar dust; (Fig. 11) interstellar local displacement vehicle.